

Adams

Oil Hole
Covers &
Cups

Bouchons
et Coupelles

Klappöler
& Kugelöler



Oil Hole Covers and Cups

A comprehensive range of straight and angled oil hole covers and cups for screw or drive fit mounting. Rotating sleeve and ball spring oilers are also available.

Bouchons et Coupelles

Une large gamme de bouchons droits ou à l'équerre et de coupelles, à visser ou à encastrer. Huileurs à douille tournante ou à clapet sont également disponibles.

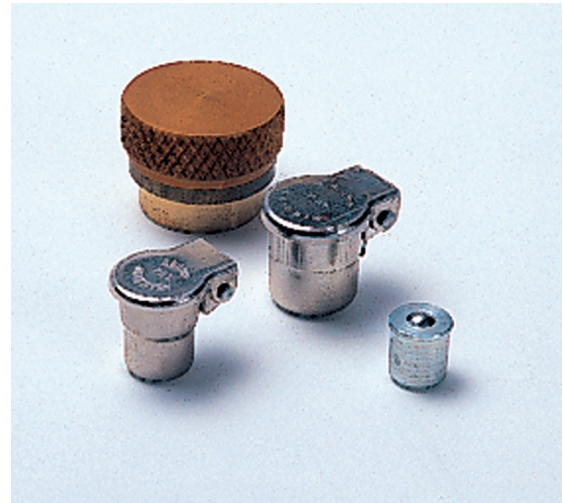
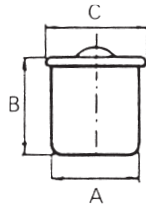
Klappöler & Kugelöler

Eine umfassende Serie aller Konstruktionen für alle Arten der Befestigung.

BALL VALVE OILERS

Material - STEEL Finish - ZINC PLATE

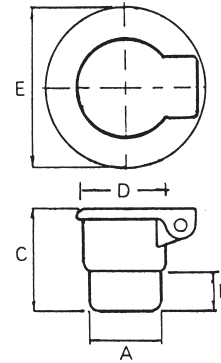
Product Code	Hole Diameter	A	B mm	C mm
A 1401	3/16"	0.190 - 0.192"	6.7	5.5
A 1402	1/4"	0.253 - 0.255"	7.7	7.1
A 1403	5/16"	0.315 - 0.317"	9.5	8.7
A 1404	3/8"	0.378 - 0.380"	8.7	10.3
A 1411	5mm	5.1mm	6.0	5.5
A 1412	6mm	6.1mm	7.0	6.5
A 1413	8mm	8.1mm	9.0	9.4
A 1414	10mm	10.1mm	11.0	11.5



SHOULDER DRIVE OIL CUP

Material - STEEL Finish - NICKEL PLATE

Product Code	Hole Diameter	A	B mm	C mm	D mm	E mm
BS 1511	1/4"	0.253 - 0.255"	5.6	11.9	7.2	15.9
BS 1512	3/16"	0.190 - 0.192"	5.6	11.9	7.2	15.9
BS 1513	6mm	6mm Taper	5.6	11.9	7.2	15.9
BS 1514	3/16"	3/16" Taper	5.6	11.9	7.2	15.9
BS 1516	5/16"	0.315 - 0.317"	6.4	13.5	8.9	19.1
BS 1518	7mm	7mm Taper	6.4	13.5	8.9	19.1
BS 1521	3/8"	0.378 - 0.380"	7.1	15.1	10.5	20.6
BS 1523	8mm	8mm Taper	7.1	15.1	10.5	20.6
BS 1536	10mm	10mm Taper	7.1	18.3	12.7	25.4
BS 1549	5/8"	0.628 - 0.630"	9.5	23.8	19.0	34.9
BS 1555	3/4"	0.753 - 0.755"	11.1	27.0	25.4	41.3
BS 1556	7/8"	0.878 - 0.880"	12.7	28.6	25.4	41.3
BS 1560	1"	1.003 - 1.005"	14.3	33.3	31.8	47.6
*BS 1573	1 1/4"	1.253 - 1.255"	17.5	38.1	41.3	63.5
*BS 1574	1 1/2"	1.503 - 1.507"	17.5	38.1	41.3	63.5

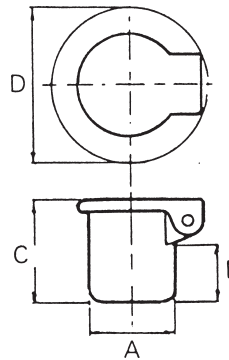


* ADD SUFFIX **DC** IF DUST PROOF COVER IS REQUIRED

DRIVE IN OIL CUPS

Material - STEEL Finish - NICKEL PLATE

Product Code	Hole Diameter	A	B mm	C mm	D mm
B 1604	1/4"	0.253 - 0.255"	36.5	41.3	15.9
B 1614	1/2"	0.503 - 0.505"	9.5	16.7	25.4
B 1620	5/8"	0.628 - 0.630"	10.3	19.1	31.8
B 1623	3/4"	0.753 - 0.755"	13.5	23.8	34.9
B 1625	1"	1.003 - 1.005"	14.3	25.4	41.3
B 1628	1 1/4"	1.253 - 1.256"	15.9	27.0	47.6
*B 1640	1 3/4"	1.753 - 1.757"	14.3	25.4	69.9
*B 1650	2 1/4"	2.253 - 2.258"	20.6	31.8	79.4

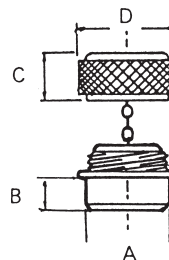


* ADD SUFFIX **DC** IF DUST PROOF COVER IS REQUIRED

SCREW CAP OIL HOLE COVER

Material - BODY BRASS Finish - NATURAL ANODIZE
CAP ALUMINUM

Product Code	Hole Diameter	A	B mm	C mm	D mm
AH 2181	3/4"	0.752 - 0.754"	6.4	9.5	23.8
AH 2182	1 5/16"	1.315 - 1.317"	9.5	17.5	38.1
AH 2183	1 5/8"	1.627 - 1.629"	11.9	19.0	49.2

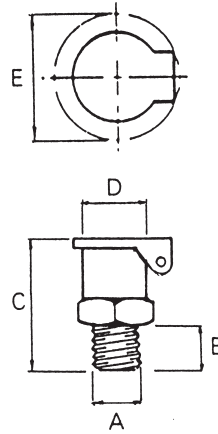


THREADED OIL CUPS

Material - Body - BRASS Filler - STEEL Finish - NICKEL PLATE

Product Code	A	B mm	C mm	D mm	E mm	Hex A/Flats
C 1730	3/16" - 32 TPI	4.8	14.3	6.4	15.9	5/16"
C 1732	1/4" - 32 TPI	4.8	14.3	6.4	15.9	5/16"
C 1733	1/4" - 26 TPI	5.6	20.6	7.1	15.9	3/8"
C 1735	10 - 32 TPI	4.8	14.3	6.4	15.9	5/16"
C 1736	2 BA	4.8	14.3	6.4	15.9	5/16"
C 1740	1/4" - 20 TPI	5.6	20.6	7.1	15.9	3/8"
C 1743	5/16" - 18 TPI	5.6	20.6	7.1	15.9	3/8"
C 1748	3/8" - 24 TPI	6.4	17.5	9.5	20.6	7/16"
C 1749	1/8" BSP	6.4	17.5	9.5	20.6	7/16"
C 1750	1/8" NPT	6.4	17.5	9.5	20.6	7/16"
C 1752	7/16" - 24 TPI	7.1	18.3	11.1	23.8	1/2"
C 1763	1/4" BSP	11.1	26.2	15.9	31.8	11/16"
C 1764	1/4" NPT	11.1	26.2	15.9	31.8	11/16"
C 1787	1/8" BSP	38.1	50.8	9.5	23.8	7/16"
*C 2141	1/8" BSP	9.5	31.8	15.9	31.8	11/16"

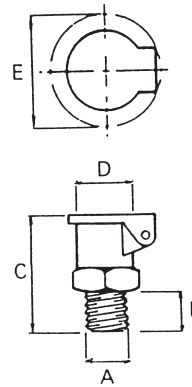
* ADD SUFFIX 'WF' IF SYPHON TUBE & WICK IS REQUIRED



THREADED OIL CUPS ROTATING SPRING LID

Material - Body - BRASS Finish - NICKEL PLATE
Filler - STEEL

Product Code	A	B mm	C mm	D mm	E mm	Hex A/Flats
C 1850	M5 x 0.8	4.0	15.0	7.5	16.0	8mm
C 1851	M6 x 1	5.0	15.0	7.5	16.0	8mm
C 1852	M6 x 1	5.0	18.5	9.5	19.0	10mm
C 1853	M8 x 1	5.0	18.5	9.5	19.0	10mm
C 1854	M8 x 1.25	6.0	18.5	11.0	21.0	12mm
C 1855	M10 x 1.5	6.0	22.0	12.5	22.0	14mm
C 1856	M10 x 1	6.0	22.0	12.5	22.0	14mm
C 1857	M12 x 1.5	8.0	27.5	15.0	27.0	17mm

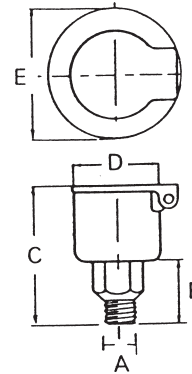


THREADED OIL CUPS

Material - STEEL Finish - NICKEL PLATE

Product Code	A	B mm	C mm	D mm	E mm	Hex A/Flats
D 1914	1/8" BSP	17.5	36.5	15.9	31.8	7/16"
D 1920	1/8" BSP	17.5	39	19.1	34.9	7/16"
D 1921	1/8" NPT	17.5	41.3	19.1	34.9	7/16"
D 1927	1/8" BSP	20.6	47.6	25.4	41.3	9/16"
D 1928	1/4" BSP	20.6	47.6	25.4	41.3	9/16"
D 1937	1/8" BSP	20.6	53	31.75	41.3	9/16"
D 1938	1/4" NPT	23.8	53	31.75	41.3	9/16"
D 1952	1/4" BSP	23.8	68.3	41.3	63.5	11/16"
D 1958	1/4" BSP	28.6	85.7	57.2	79.4	11/16"
D 1959	3/8" BSP	29.4	85.7	57.2	79.4	11/16"
D 1960	1/2" BSP	31.8	88.9	57.2	79.4	7/8"
D 1961	3/8" NPT	28.6	85.7	57.2	79.4	11/16"

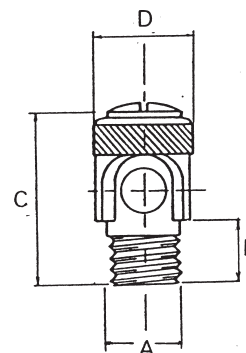
ADD SUFFIX 'WF' IF SYPHON TUBE AND WICK IS REQUIRED



ROTATING SLEEVE OILER

Material - BRASS Finish - NICKEL PLATE

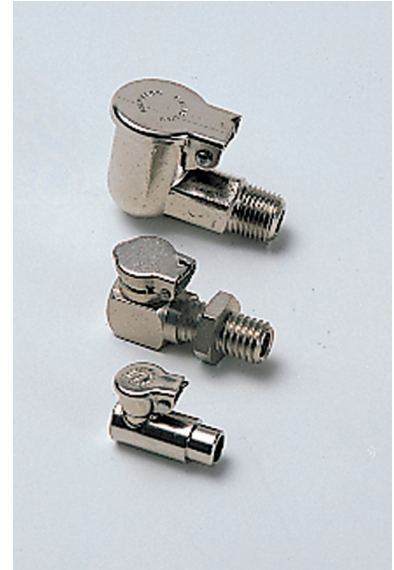
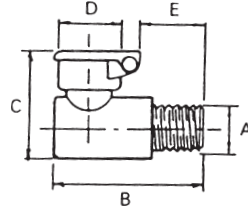
Product Code	A	B mm	C mm	D mm
I 2202	1/4" - 26 TPI	6.4	17.5	8.7
I 2204	3/16" - 32 TPI	6.4	17.5	8.7
I 2209	5/16" - 18 TPI	6.4	19.1	11.1
I 2215	1/8" BSP	7.9	22.2	12.7



THREADED ELBOW OIL CUP (90°)

Material - Body-BRASS Filler-STEEL Finish-NICKEL PLATE

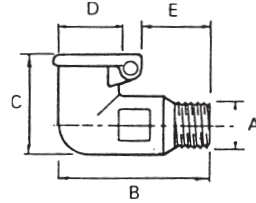
Product Code	A	B	C	D	E
		mm	mm	mm	mm
L 2601	3/16" - 32TPI	19.1	14.3	6.4	8.7
L 2602	1/4" - 32 TPI	19.1	14.3	6.4	8.7
L 2603	1/4" - 26 TPI	19.1	14.3	6.4	8.7
L 2604	10 - 32 TPI	19.1	14.3	6.4	8.7



THREADED ELBOW OIL CUP (90°)

Material - Body-BRASS Filler-STEEL Finish-NICKEL PLATE

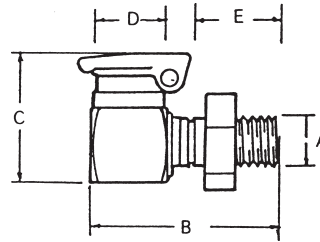
Product Code	A	B	C	D	E
		mm	mm	mm	mm
LS 2616	5/16" - 32TPI	23.8	15.9	7.9	10.3
LS 2630	1/8" BSP	25.4	20.6	9.5	11.9
LS 2633	3/8" - 24TPI	25.4	20.6	9.5	11.9
LS 2680	1/8" NPT	34.9	25.4	15.9	14.3
LS 2681	1/8" BSP	34.9	25.4	15.9	14.3



THREADED ELBOW OIL CUP (90°) ROTATING SPRING LID

Material - Body-BRASS Filler-STEEL Finish-NICKEL PLATE

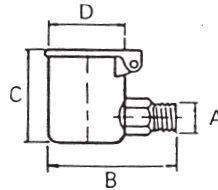
Product Code	A	B	C	D	E
		mm	mm	mm	mm
L 2710	M6 x 1	24.0	15.0	7.5	13
L 2711	M8 x 1	28.0	18.0	9.5	14
L 2712	M10 x 1	30.0	20.0	12.5	14
L 2713	M12 x 1.5	34.0	22.0	15.0	15



THREADED ELBOW OIL CUP (90°)

Material-STEEL Finish-NICKEL PLATE

Product Code	A	B	C	D	Hex A/Flats
		mm	mm	mm	
M 3011	1/8" BSP	33.3	26.2	15.9	7/16"
M 3017	1/8" BSP	36.5	30.2	19.1	7/16"
M 3018	1/8" NPT	41.3	28.6	19.1	7/16"
M 3024	1/8" BSP	46.0	35.7	25.4	9/16"
M 3025	1/4" BSP	46.0	35.7	25.4	9/16"
M 3026	1/4" NPT	46.0	34.9	25.4	9/16"
M 3031	1/8" BSP	52.4	40.5	31.8	9/16"
M 3032	1/4" BSP	52.4	40.5	31.8	9/16"
M 3041	1/4" BSP	65.1	52.4	41.3	11/16"
M 3042	3/8" BSP	65.1	52.4	41.3	11/16"
M 3064	1/4" BSP	85.7	58.7	57.2	11/16"
M 3065	3/8" BSP	85.7	58.7	57.2	11/16"

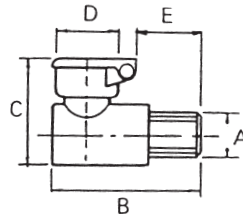


ADD SUFFIX "WF" IF SYPHON TUBE & WICK IS REQUIRED (EXCEPT M3011)

DRIVE IN ELBOW OIL CUP (90°)

Material - Body-BRASS Filler-STEEL Finish-NICKEL PLATE

Product Code	A	B	C	D	E
		mm	mm	mm	mm
L 2511	0.253 - 0.255"	19.1	14.3	6.4	8.7
L 2531	0.378 - 0.380"	27.0	19.8	9.5	11.1



DRIVE IN ELBOW OIL CUP (90°) ROTATING SPRING LID

Material-STEEL Finish-NICKEL PLATE

Product Code	A	B	C	D	E
		mm	mm	mm	mm
L 2540	6mm	20.0	14.5	7.0	8.5
L 2541	8mm	24.0	17.5	9.0	9.0
L 2542	10mm	28.0	20.0	11.0	12.0
L 2543	12mm	32.0	22.0	13.0	15.0

